



*User's Manual*

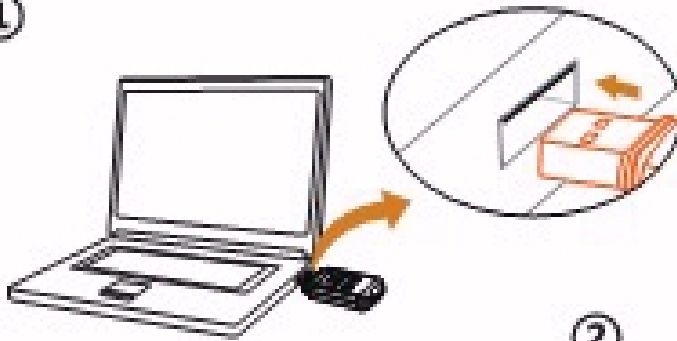
# **RC-5+** **PDF Temperature Data Logger**



Software download: [www.elitechlog.com/software](http://www.elitechlog.com/software)

## How to use

①



Connect the data logger to a computer to set configuration parameters <sup>I</sup>

②



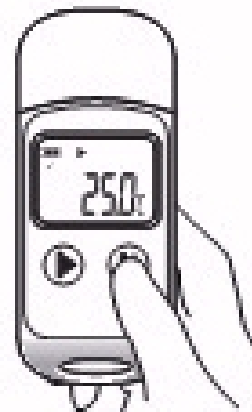
Press and hold the left key for 5 seconds to start recording <sup>II</sup>

③



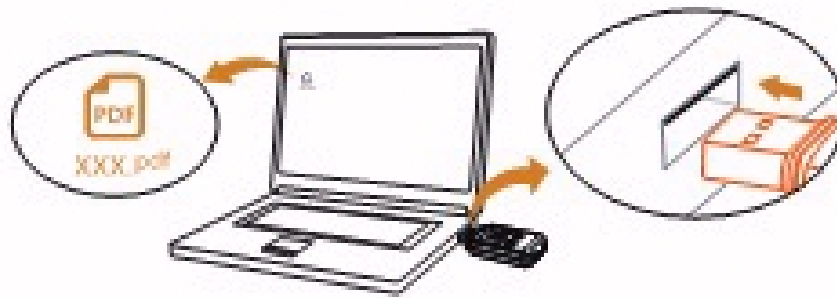
Quickly click the right key twice to mark the current time and temperature

④



Press and hold the right key for 5 seconds to stop recording <sup>III</sup>

⑤



Open the data report in the newly created removable disk of your computer and view the data. You can also view the data by operating the data management software.

**Note:**

① Default setting:

Run time	30 days	Start delay: 0 min
Log interval	2min	Cyclic record: disabled
Trip ID	0000001	Temporary report: enable
Time zone	UTC +0:00	Multi-start/stop: enabled
Start mode	press button	Calibration: $\pm 0^{\circ}\text{C}$
Alarm setting	no	Alarm setting: no
Trip description Temperatrue recording		
Stop mode: press button, via software		

② In the following two cases, the data logger can also be turned on with the left key not pressed.

**Immediate start mode:** The data logger is turned on immediately after disconnecting with the computer.

**Timing start mode:** the data logger starts recording at scheduled time after disconnecting with the computer.

③ Directly connect the data logger to the computer with no need to stop it, you may view the temporary report.

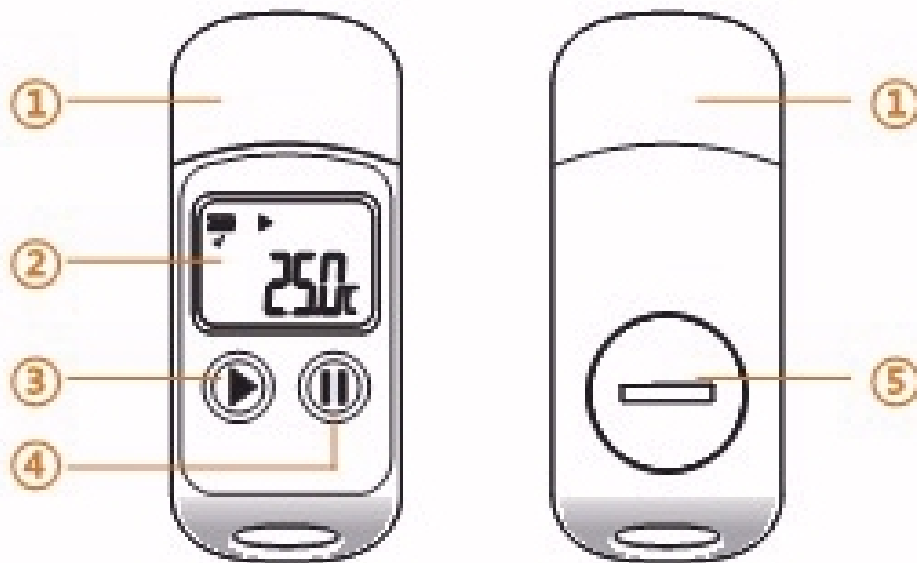
The logger stops automatically when the set run time elapses.

## Technical Specifications

<b>Recording Options</b>	Multi-Use
<b>Temperature Range</b>	-30°C to 70°C
<b>Temperature Accuracy</b>	±0.5(-20°C/+40°C);±1.0(other range)
<b>Temperature Resolution</b>	0.1°C
<b>Data Storage Capacity</b>	32,000 readings
<b>Shelf Life/Battery</b>	1 years <sup>1</sup> /CR2032 button cell
<b>Recording Interval</b>	3 minutes(standard)
<b>Startup Mode</b>	Button or software
<b>Stop Mode</b>	Button, software or stop when full
<b>Protection Class</b>	IP67
<b>Demensions</b>	80mmx25mmx12mm(LxWxH)
<b>Weight</b>	35g

<b>Certifications</b>	EN12830, CE, RoHS
<b>Validation Certificate</b>	Hardcopy
<b>Software</b>	PDF /ElitechLog Win or Mac (latest version)
<b>Report Generation</b>	Automatic PDF report
<b>Password Protection</b>	Optional on request
<b>Connection Interface</b>	USB 2.0, A-Type
<b>Alarm Configuration</b>	Optional, up to 5 points
<b>Reprogrammable</b>	With free Elitech Win or MAC software
<p>1. Depending on optimal storage conditions (±15°C to +23°C/45% to 75% rH)</p>	

## Product Schematic



- 
- ① USB protective cover      ④ Key (right) <sup>II</sup>
- 
- ② LCD screen                      ⑤ Battery cover <sup>III</sup>
- 
- ③ Key (left) <sup>I</sup>
- 

### Note:

<sup>I</sup> Left key function

---

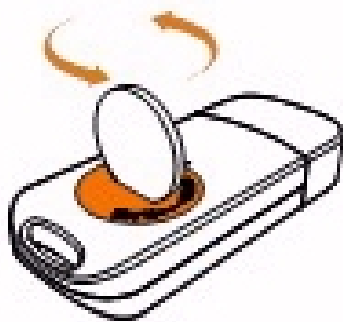
Operation	Function
Press and hold 5s	Start recording
Press once	Light the screen, turn pages

---

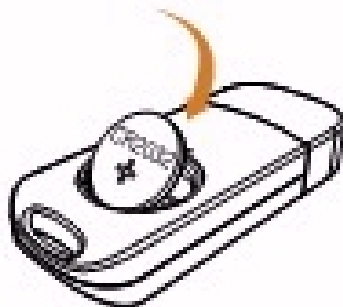
## Ⓜ Right key function

Operation	Function
Press and hold 5s	Stop recording
Press once	Return to main menu
Press twice	Mark the event

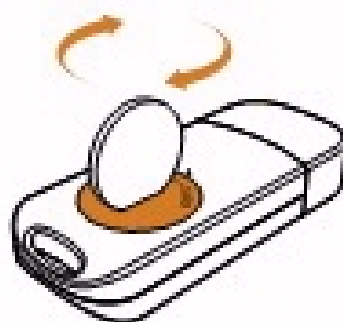
## Ⓜ Replace the battery with a coin as follows:



- ①. Turn the battery cover counterclockwise to open it.

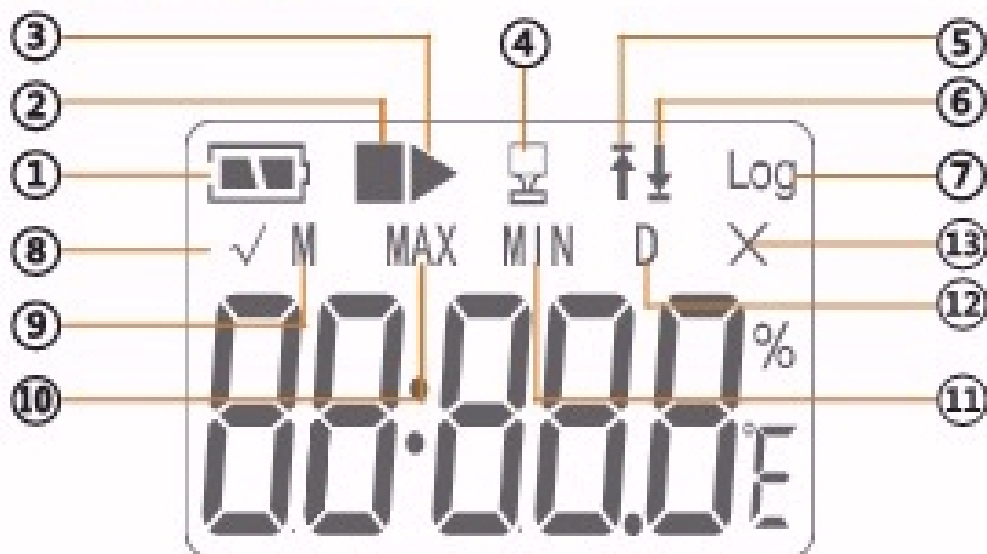


- ②. Put in a new CR2032 button battery, with the negative inward.



- ③. Turn the battery cover clockwise to close it.

## LCD Display



① Power indicator

⑧ No alarm/Marked

② Stop status

⑨ Date - month

③ Record status

⑩ Maximum temperature

④ Computer connection

⑪ Minimum temperature

⑤ Alarm: above upper limit

⑫ Date-day

⑥ Alarm: below lower limit

⑬ Alarm/Mark failed

⑦ Current readings

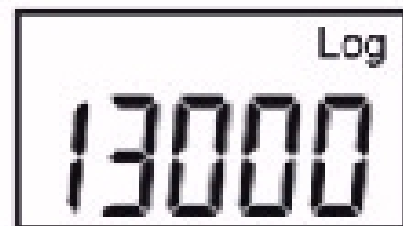
## LCD Menu

Press the left key to view the content of each page. Press the right key in any page to return to the first page.





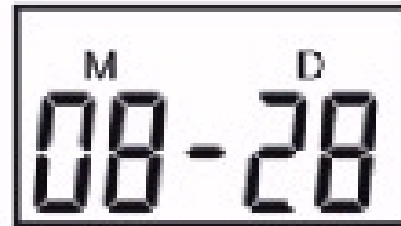
1. Current temperature



2. Number of readings



3. Current time: hour:minute



4. Current date: month - day



5. Maximum temperature



6. Minimum temperature

## Application

The data logger is mainly used to monitor the temperature of food, medicine, chemicals and other products in storage and transport. It can be widely applied to all links of warehousing and cold-chain logistics, such as refrigerated containers, refrigerated trucks, cooler boxes, cold storage, laboratories, etc.

## Precautions

- ◆ Please read the manual carefully before using the logger.
- ◆ To synchronize system time, it is recommended to connect the logger to a computer for parameter configuration before it is used for the first time.
- ◆ The LCD screen will be off after 15 seconds of inactivity. Press the left key to lighten it.
- ◆ Never dismantle the battery. Do not remove it if the logger is running.
- ◆ Replace the battery in time for long distance transport if its power remains half.
- ◆ Replace old battery with a new CR2032 button cell with the negative inward.

Elitech Technology, Inc.

[www.elitechlog.com](http://www.elitechlog.com)

1551 McCarthy Blvd, Suite 112

Milpitas, CA 95035 USA

V2.0

---